

The WATERWAY

AT LAKE OKEECHOBEE

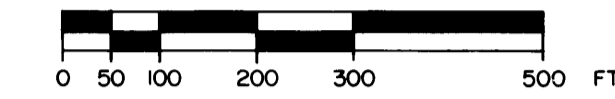
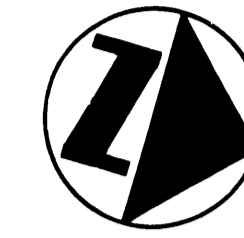
JULY, 1981

I, LOUISE V. ISAACS, CLERK OF THE CIRCUIT COURT OF MARTIN COUNTY, FLORIDA, HEREBY CERTIFY THAT THIS PLAT WAS FILED FOR RECORD IN PLAT BOOK 8 PAGE 83 MARTIN COUNTY, FLORIDA, PUBLIC RECORDS, THIS DAY OF 1981.

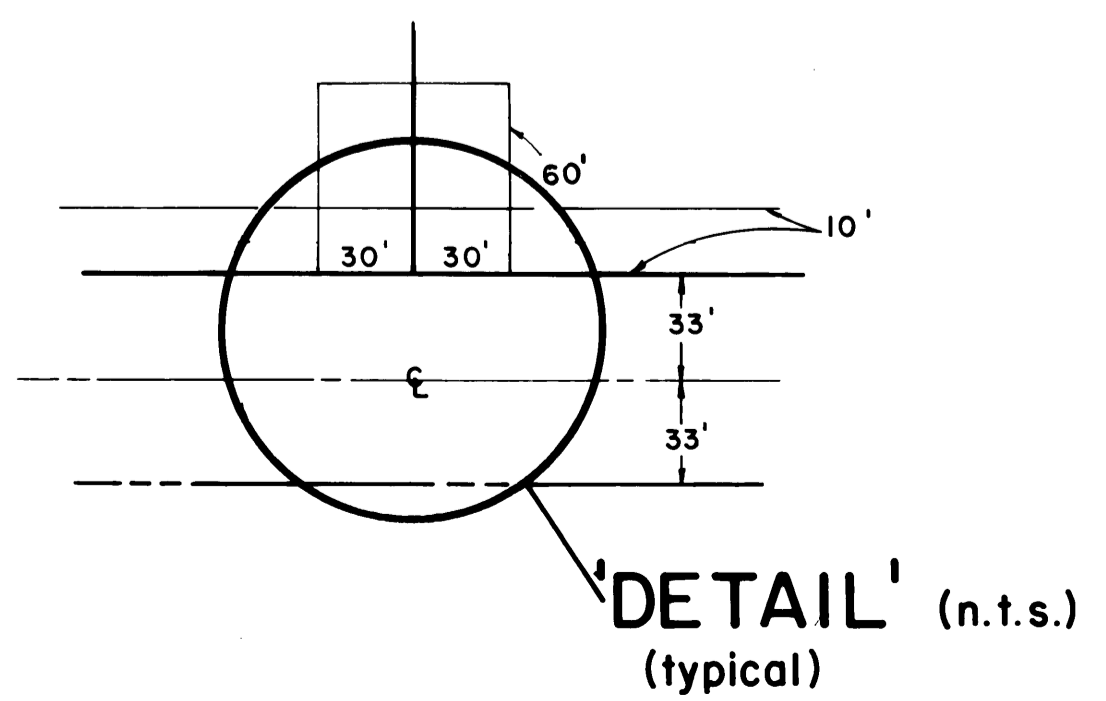
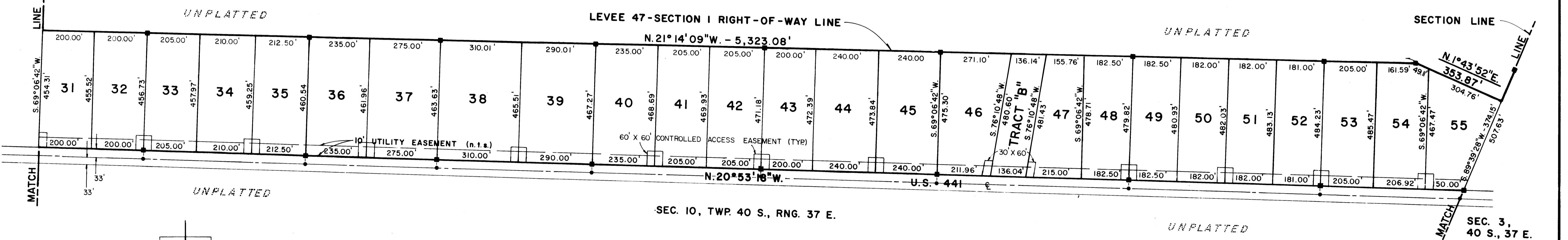
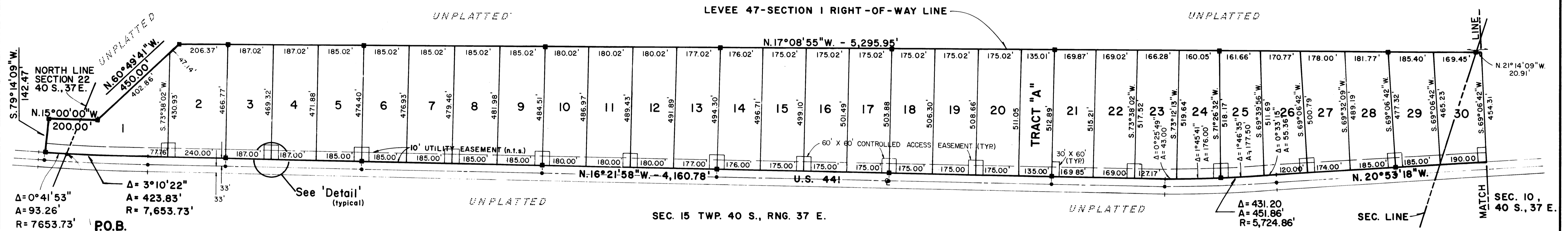
LOUISE V. ISAACS, CLERK CIRCUIT COURT MARTIN COUNTY, FLORIDA

BY: _____

FILE NO. _____



BEING PORTIONS OF SECTIONS 22, 15, 10, 3 AND 4, TOWNSHIP 40 SOUTH, RANGE 37 EAST AND PORTIONS OF SECTIONS 33, 28 AND 29, TOWNSHIP 39 SOUTH, RANGE 37 EAST, MARTIN COUNTY, FLORIDA.



BEARING BASE:
THE SOUTH LINE OF SECTION 4, TOWNSHIP 40 SOUTH, RANGE 37 EAST, IS TAKEN AS BEING S 89° 39' 28\"/>

- = PERMANENT REFERENCE MONUMENT
- = PERMANENT CONTROL POINT

NOTE: PCP's shown on this plat have been placed at the intersection of the centerline of U.S. #441 and the lot lines extended.

THERE SHALL BE NO LOT SPLITS EXCEPT TO CREATE LARGER LOTS.

NOTE: Access to all lots are through Controlled Access Easements only

LINDAHL, BROWNING, FERRARI & HELLSTROM, INC. CONSULTING ENGINEERS, PLANNERS & SURVEYORS		
426 INDIANTOWN ROAD Ft. RUCKENSTEIN JUPITER, FLORIDA 33458	951 COLORADO AVENUE SUITE 400 STUART, FLORIDA 33494	111 SOUTH SECOND STREET SUITE 202 FORT PIERCE, FLORIDA 33450
2	3	3